



## JOIN THE RESOURCE GLOBAL COHORT IN JAKARTA



### Global Community

Our Global Leadership Community that brings young Christian leaders from various backgrounds, industries, and churches who share a commitment to impact their city together. Across the eight months, we bring together cohort members from different cities to engage with one another virtually and then gather them all together physically during our Global Cohort Gathering in June.



### Mentorship

During the global cohort, we pair each cohort member with an older, more experienced mentor in a similar field of work. For at least once a month, they are able to share life, share problems, and challenge one another to live out their faith in the various areas of life.



### Curriculum

Our curriculum focuses on what it means for the Gospel to impact all that we do in our work, our calling, our leadership, and mission. Each month we invite various global leaders and teachers to share their expertise, experience, and encouragement to our leaders locally and globally. We supplement our curriculum with articles, videos, and books so that each global cohort can bring in contextualized material and go deeper in certain subjects.



### (NEW) Gospel Action Plan

At the end of the cohort, we ask all cohort members to write up a Gospel Action Plan that consists of one practical action step they can implement from what they've learned and gain from the cohort. Whether it's looking to impact their workplace, their communities, or start a new initiative at their church, each cohort member is challenged to make that commitment after the cohort ends.

“Resource Global has had a large impact on my growth as an entrepreneur and a woman of faith. The speaking events, cohort gatherings, mentorship, and retreat have all helped to shape my perspective around how I can use my work to bring honor to God. I am grateful for the opportunity to be shepherded by this community as I work on expanding my business and impact.”

**EMILY HARBURG | CHICAGO COHORT**  
Director of Emerging Technology & Innovation at Education First,  
Co-Founder at Brave Camps Inc.



#### Gospel Foundations

1. Gospel-Centered Story
2. Gospel-Centered Identity and Calling
3. Gospel-Centered Vocation (Work)
4. Gospel-Centered Leadership
5. Gospel-Centered Mission



#### Gospel Contexts

6. City Specific Issue #1
7. City Specific Issue #2



#### Gospel Action

8. Action Plan Sharing

## Requirements & Expectations of Participants

### Requirements

- Candidates should be deeply committed to the Christian Faith
- Be active and serving in the local church
- 25-40 years old
- Committed to their City
- Show leadership qualities in their vocational field and community

### COST

12 Juta  
(RP. 12.000.000)

Covers GCG Retreat room and board, as well as Programming

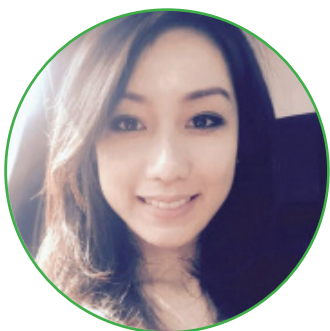
### ► Expectations: During Cohort

- Attend all monthly cohort meetings and monthly triad meetings (two meetings per month)
- Full preparation and participation of curriculum material
- Provide consistent feedback to Resource Global staff during occasional one-on-one meetups
- Attend GCG Retreat in early June

### ► Expectations: After Cohort

- Be involved in the Resource Global Alumni Network as an advocate, a future mentor, or even future teacher
- Commit to and be accountable in their individualized action plan
- Continue to engage in their vocation, church and city for the sake of the Gospel

## Jakarta Cohort Leader



**GRACE LIU**

*Cohort Leader in Jakarta*

Grace Liu was born in Indonesia but spent nearly all of her childhood in the US, but has settled in Jakarta after college. Grace is passionate about 2 main things: career counseling and building community. She has been in the education sector for about 6-7 years, counseling high school students on the most suitable career path based on their interests, strengths and capabilities. Her passion for building community is displayed as she coordinates life groups at her international church in Jakarta and currently leads 3 of them on a weekly basis.

She now has been with Resource Global for over a year and is currently exploring new potential cohort sites in SE Asia. Grace is married to Ronald, and has been blessed with two children. She is big on coffee, bubble tea, and Muay Thai. She also loves grabbing one on one coffee with people to just dig deeper into their lives and get to know more of their personal stories.

*For more information email [gliu@resourceglobal.org](mailto:gliu@resourceglobal.org)*